



## PRESSURE MEASUREMENT

### Pressure Gauge - Diaphragm Operated

Series SCH - All stainless steel construction

Data Sheet P SCH4

#### Service Intended

Suitable for aggressive gaseous and liquid media under extreme conditions. Diaphragm gauges are suitable for viscous, crystallising or polluting media. The design ensures resistance to vibration and protection against over pressures.

#### Case Details

Nominal Dia: 100 & 160mm  
Material: Stainless steel 304.

#### Bezel

Type T: S/Steel bayonet lock, twist type - removable.  
Material: Stainless steel 304

#### Pressure Connections

Material: Stainless steel 316.  
Sizes : 1/2" BSP or NPT male or female threaded.  
: Open flange on request.  
Position: Radial bottom connection only.

#### Diaphragm Flange Material & Dimensions

Upper flange (gauge) : Stainless steel 316  
Lower flange (process): Stainless steel 316  
(Exotic material optional)  
Ranges 4 kPa to 25 kPa : Flange Ø 160 mm  
Ranges 40 kPa to 2500 kPa: Flange Ø 95mm  
Gaskets: PTFE or Klingerit IT1000

#### Measuring System

Diaphragm with push rod principle.  
Material: Stainless steel 316.  
(Exotic Material or PTFE protection optional)

#### Geared Movement

Material: Clockwork brass or stainless steel.

#### Pointer

Collet: Aluminium or brass  
Blade: Black aluminium

#### Dial

Material: Aluminium, white with black lettering.

#### Window

Instrument glass or plexiglass. (Plexiglass recommended for food applications)

#### Weather Protection

IP 65 Dust & weather proof.

#### Working Pressure

Steady : Full scale value  
Fluctuating : 90% of full scale value  
Short Period: 130% of full scale value  
Over Pressure Safety: 5 x full scale value not exceeding 40 bar.

#### Accuracy Class

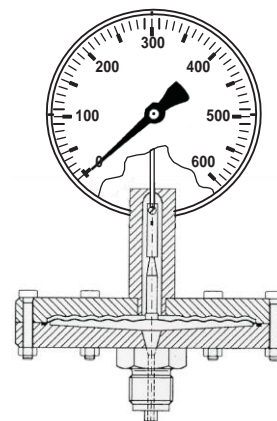
Class 1.6

#### Operating Temperature

Ambient: -20°C to + 60°C  
Medium: + 100 °C  
Error: 0,5% of fsd / 10°C above or below 20°C

#### Optional Extras

Glycerine filling of case  
Calibration Certificate  
Customized scale plates ( customer logo, red line, etc )  
Special Dials, other than standard ( dual scale, bar, psi )  
Colour Coding of dial  
Drag pointer ( maximum set pointer )  
Micro adjustable pointer



For dimensional drawing see technical section

#### STANDARD PRESSURE RANGES

Ranges	Figure Interval	Minor Graduations	Ranges	Figure Interval	Minor Graduations
Pressure			Pressure		
0/4 kPa	1	0.1	0/800 kPa	100	10
0/6 kPa	1	0.1	-100/0/500 kPa	200	20
0/10 kPa	2	0.2	0/1600 kPa	200	20
0/16 kPa	2	0.2	0/2500 kPa	500	50
0/25 kPa	5	0.5			
0/40 kPa	10	1	<b>Compound</b>		
0/60 kPa	10	1	-100/0/300 kPa	100	10
0/100 kPa	20	2	-100/0/500 kPa	100	10
0/160 kPa	20	2	-100/0/700 kPa	100	10
0/250 kPa	50	10	-100/0/900 kPa	200	20
0/400 kPa	100	10	-100/0/1500 kPa	500	50
0/600 kPa	100	10	-100/0/2400 kPa	500	50

Customized and other scales such as bar / psi / inHG etc. are available on request